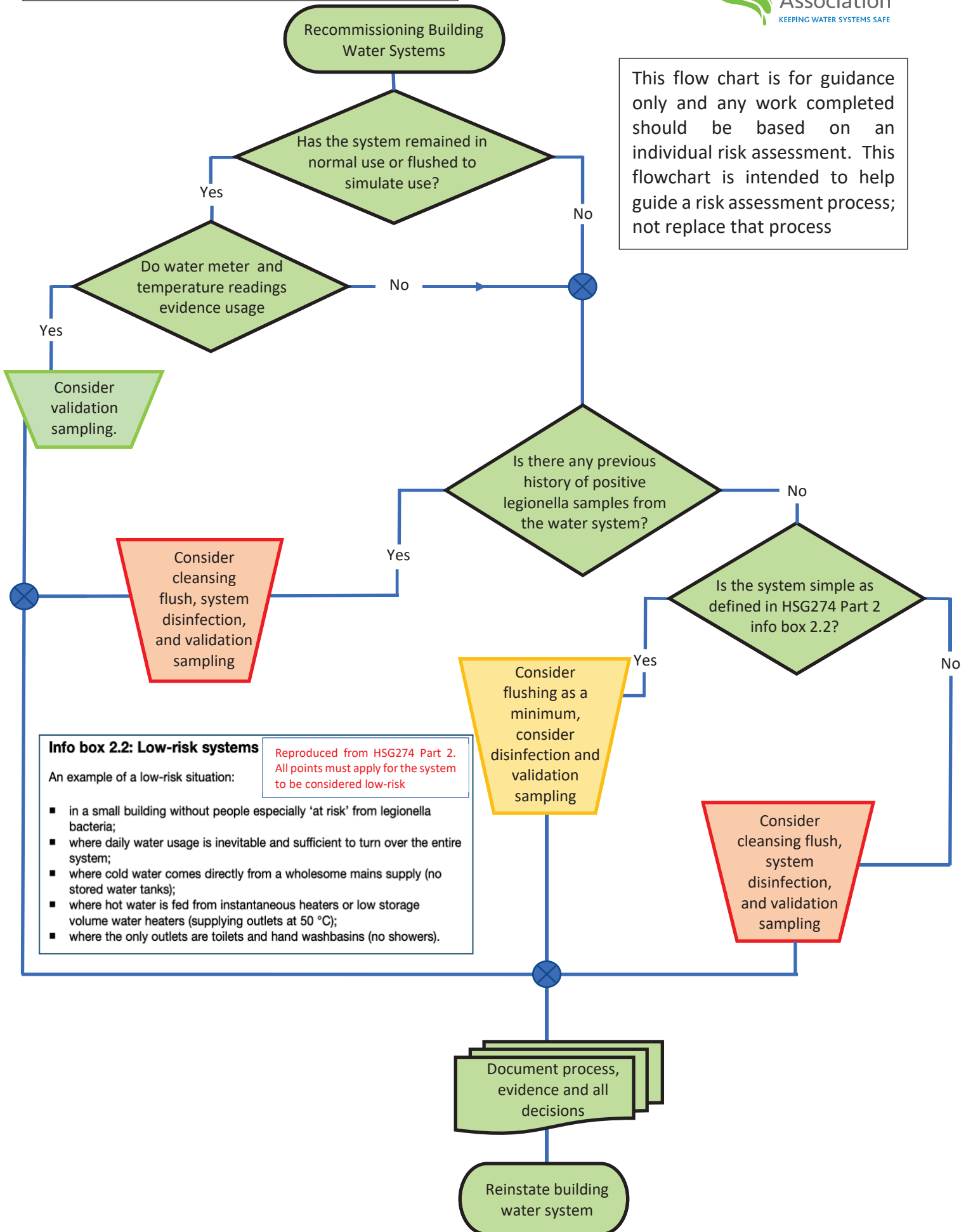


Guidance Flow Chart for Water System Recommissioning

This flow chart is for guidance only and any work completed should be based on an individual risk assessment. This flowchart is intended to help guide a risk assessment process; not replace that process



Info box 2.2: Low-risk systems
 An example of a low-risk situation:

- in a small building without people especially 'at risk' from legionella bacteria;
- where daily water usage is inevitable and sufficient to turn over the entire system;
- where cold water comes directly from a wholesome mains supply (no stored water tanks);
- where hot water is fed from instantaneous heaters or low storage volume water heaters (supplying outlets at 50 °C);
- where the only outlets are toilets and hand washbasins (no showers).

Reproduced from HSG274 Part 2. All points must apply for the system to be considered low-risk